



**LAGRANGE**  
COLLEGE

# Interim Bulletin

## January 2015

Study-Away Travel Program

Internships

On-Campus Courses

On-Line Courses



GLOBAL  
ENGAGEMENT

# The Interim

The Interim is that class term held during the month of January for approximately four weeks and is coordinated by the Office of General Education and Global Engagement. Courses offered in the Interim are designed to encourage students to explore course content outside of their majors. All students who enter as freshmen must successfully complete three of the four Interim terms offered during a typical four-year course of study. For students who transfer to LaGrange College, reductions are made in this requirement based on the academic standing of the student at entry.

The course descriptions indicate eligibility for the class, approximate cost, grading format available, and classroom location. All classes will assemble for the first class meeting at either 9:00 AM or 1:00 PM on Monday, January 5, 2015, in the specified locations. Meeting times for subsequent class sessions will be announced at this mandatory first class session. All Interim classes require a minimum of 120 hours per term of student involvement and carry 3 semester hours of course credit.

To be eligible for any Interim course, all academic, procedural, financial, and other prerequisites must be met. The costs listed in the course description are the anticipated per-participant charges for that particular class. Students are responsible for purchasing their own textbooks.

## Study Away

During the Interim Term, LaGrange College offers several opportunities for off-campus study which require travel, some of which include travel to other states or travel beyond the United States. Such travel inevitably involves risk – accident, injury, illness, civil unrest, and other unforeseen circumstances. These risks are ones that neither those who sponsor travel nor those who travel can control. Participation in such an off-campus study program is purely voluntary on the student's part. As a condition for participation, LaGrange College requires that student travelers and their parents read and execute liability releases and other documents which acknowledge, accept, and assume all risks. LaGrange College expects that students and their parents will use their own due diligence in informing themselves of current global conditions and in determining whether they wish the students to engage in travel to given sites.

Non-Student Travelers: Check with Study Away and the instructor for availability. A travel release form, a medical/emergency contact form, and a copy of the passport must be submitted and on file in the Office of General Education and Global Engagement for each person traveling. An additional 10% of the published trip cost is required from non-student travelers.

## FOR ALL STUDY AWAY COURSES

Eligibility: Age 18 by January 1, 2015, and a valid passport.

Deposit: \$500 due prior to registration\*

Balance: Due by Oct. 1, 2014\*

\*Unless otherwise indicated in course description.

## Pre-registration for The Interim

Pre-registration for Interim courses (Travel, Internships, or On-Campus) is September 18, 19 and 22-25, 2014. Students are encouraged to discuss any questions about courses with the indicated instructors during the week prior to pre-registration. Students who are pre-registering for travel courses must contact the instructor of the course to obtain all necessary information and the permission of the instructor to apply to travel. Travel application forms and instructions are available on PantherNet under Global Engagement. Travel is coordinated through the Office of General Education and Global Engagement. Students who already have applied and registered for travel courses and have paid deposits do not need to do anything further at this time.

## FOR MORE INFORMATION CONTACT

Dr. Sarah Beth Mallory  
Associate Provost and Biology Professor  
(706) 880-8338 or [smallory@lagrange.edu](mailto:smallory@lagrange.edu)

Michele Raphoon  
Program Coordinator  
(706) 880-8429 or [mraphoon@lagrange.edu](mailto:mraphoon@lagrange.edu)

Office of General Education and Global Engagement  
202 Quillian Building  
LaGrange College  
601 Broad Street  
LaGrange, GA 30240

Although no major revisions are anticipated in the courses described in this bulletin, LaGrange College reserves the right to make whatever changes may be necessary in the status, costs, requirements, or other details of its Interim courses. Any course may be canceled for adequate reason, such as lack of sufficient enrollment.

# STUDY AWAY COURSES

## international travel projects

### LONDON

#### Art and Architecture of London

10002 INTM 3474 Section A

Dorothy Joiner

10003 INTM 3474 Section B

Margaret Reneke

DODD LECTURE HALL (AM)

This course focuses on the rich legacy of art and architecture of London. Students will visit the city's museums and architectural monuments: The British Museum, The National Gallery, The Tate Museum of British Art, Tate Modern, The Victoria and Albert Museum, The Wellington Collection, Saint Paul's Cathedral, and Westminster Abbey. The group will also visit Stonehenge, Salisbury Cathedral, and Windsor Castle.

Evaluation will be based on attendance at all classes and site visits and the successful completion of a research project and journal.

Maximum Enrollment: 15 per section

Eligibility: Open

Anticipated Cost: The price of \$3300 includes airfare, hotel accommodations, breakfast each day, museum and site entrances, and ground transportation.

Grading: Pass/No Credit or A-F: Student's Choice

FIRST CLASS MEETING: DODD LECTURE HALL, 9 AM

### PERU

#### Peru: Empire of Hidden Treasures

10007 INTM 3477 Section A

Alicia Campbell

10008 INTM 3477 Section B

Lisa Crutchfield

MANGET 107 (AM)

A rebel alliance fights against Imperial forces, but it's not Star Wars. A country fights wars with all of its neighbors, but it's not Israel. An aristocratic class rebuilds its homeland after years of war, but it's not "Gone with the Wind." Dissidents are executed for what they believe, but it's not Schindler's List. A wicked terrorist group targets innocents via bombings and assassinations, but it's not Al-Qaeda. And a leftist dictator from the military comes to power, but it's not Hugo Chavez.

What fascinating country could have experienced all of these? It's Peru. In addition to its captivating political tale, Peru has a rich history as local natives, especially the Incas, fought to build their empire, domesticate the Peruvian highlands, and defend against Spanish colonialism. You do not need to travel to the other side of the world to witness evidence of classic civilizations or climb ancient ruins. Peru's complex civilizations date to 900 BC, making them contemporaries of Ancient Greece. The history of the area is a tale of empires and conquest, from the ancient Chavin culture to the colonial conflict between the Incas and the Spanish to Tupac Amaru II's continued rebellion in the late eighteenth century.

The past and the present are connected by the Quechua language and culture. The same language spoken by workers constructing Machu Picchu in the 15th century can be heard on the streets of Cuzco today. The people of Peru blend their heritage with their current lives through their religion, food, dress and many other aspects of their daily life. We will experience this collision of past and present first hand as we travel to Lima, the urban capital, the Urubamba Valley, home to sacred ruins, Machu Picchu, the wondrous city of the lost Incas, and Cuzco, the so called "navel of the world." To find out more about this captivating country, join us on this trip through history.

Evaluation will be based on discussion and participation, a travel journal and a final project.

Maximum Enrollment: 10 per section

Eligibility: Open

Anticipated Cost: \$3400

Grading: Pass/No Credit or A-F: Student's Choice

FIRST CLASS MEETING: MANGET 107 9 AM

### VIETNAM

#### The Vietnam War

10010 INTM 3478

Joseph Cafaro

CACAD 218 (AM)

This course will examine the U.S. involvement in Vietnam from the initial efforts in World War II, through the financial and material support of France until the latter's defeat at Dien Bien Phu in 1954, and then follow our growing efforts to prop up the South Vietnamese Government leading to full escalation of U.S. troop commitment in the 1964-1973 period. The course will also cover the uneasy "peace" brought about by the Paris Peace Accords of 1973 and conclude with the final defeat of the South and the unification of the nation by the North Vietnamese.

Students will engage in readings, discussions, multi-media, oral interviews with Vietnam Veterans and will complete a travel journal upon return from the trip.

Maximum Enrollment: 12

Eligibility: Open

Anticipated Cost: \$4010 includes airfare and all transportation, accommodations, all entrance fees, light breakfast and seven lunches and dinners.

Grading: Pass/No Credit or A-F: Student's Choice

FIRST CLASS MEETING: CACAD 218, 9 AM

## THAILAND--CLOSED

### Schooling in Thailand

10015 INTM 3483 Section A

Don Livingston

10016 INTM 3483 Section B

Sharon Livingston

HAWKES 127 (PM)

The objective of this course is to learn about Thai education through teaching English and the arts in a hill tribe school, located on Sameong Mountain outside Chiang Mai, Thailand. The school has approximately 100 students; the majority of the students are Mong and Thai Yai (ethnic hill tribe groups) ranging from 7-12 years old. Cultural excursions in the city and surrounding mountain regions of northern Thailand are part of this 17-day experience.

Evaluation will be based on attendance and participation in pre-trip classes and field experiences; guided reflections; and, video and photo presentations.

Maximum Enrollment: 6 per section

Eligibility: Open

Anticipated Cost: \$3100 includes airfare, lodging, ground transportation, and some meals.

Grading: Pass/No Credit

FIRST CLASS MEETING: HAWKES 127, 1 PM

## Service Projects

## EL SALVADOR--CLOSED

### El Salvador Immersion

10020 INTM 3441

Alvin Lingenfelter

MANGET 208 (AM)

Experience a full cultural and educational immersion in Ahuachapán, El Salvador, by spending almost three weeks working with and for the El Salvadoran people. This Servant Leadership themed course will provide opportunities to serve in health clinics, children's education/after school programs and slum neighborhoods, while elevating Spanish language skills, and working alongside the United Methodist Church and missions organizations with possible church or school programs and construction. Students will also have a chance to work and serve in their major area of interest. On weekends we will enjoy days off to travel to volcanoes, enjoy hikes in the mountains and even surfing in the Pacific. Some Spanish language skills are helpful. All majors are welcome.

El Salvador is a country of great beauty and intense need...the perfect place to spend a January you'll never forget.

Set up a meeting with Professor Lingenfelter to find out even more!

Maximum Enrollment: 12

Eligibility: Interview and approval by the professor

Anticipated Cost: \$2800

Grading: A-F Scale

FIRST CLASS MEETING: MANGET 208, 9 AM

## PHILIPPINES--CLOSED

### Service and Sustainability in the Philippines

10018 INTM 3461 Section A

David Ahearn

10019 INTM 3461 Section B

Jayne Pauley

MANGET 209 (AM)

This travel course provides an opportunity to experience service learning in Manila, Philippines, and study coral reef ecology in the Philippines. Metro Manila is one of the densest population centers on the planet and includes 14 million inhabitants spread along Manila Bay. The Philippines is a nation of almost staggering complexity. This nation of over 80 million people includes 7000 islands and 80 local languages. Since English is the language of instruction in schools, students will be able to relate to local people through English. Filipino culture has an Asian foundation, but has been modified by 3 centuries of Spanish and American colonial rule.

The Philippines ecology also is diverse and beautiful, including volcanoes, rain forests, beaches, and one of the world's most diverse coral reefs. All students will work with the Kapatiran - Kaunlaran Foundation, a Methodist-related organization that serves some of the poorest communities in Manila. We will serve as teachers in the kindergarten enrichment program, distribute food, and serve as big brothers and sisters to the abandoned children who now live at the Gilead Center in the town of Bulacan. Students in Section A will do more extensive work at KKFI. Nursing students are encouraged to sign up for Section B. You will be able to serve at Mary Johnston Hospital near Manila. You will work with local nursing students and nurses as they do their clinical rotations. After approximately 10 days of service, all students will travel to the island of Oriental Mindoro to explore the biodiversity of coral reefs. Students will snorkel in shallow water. Some students may choose to complete an optional scuba diving short course to explore the reefs at great depth. Trip duration: 15-18 days.

This course is the best match for students who are flexible, ready for adventure, willing to engage people who are very different from those you know, and strongly oriented towards service. An interview with the professor is required before admission to the course.

Prior to departure, there will be an exam on the history and culture of the Philippines. Students will also choose a Philippines island/reef animal (a list will be provided) to research. While in the Philippines, each student will present their information to the group. A Service Journal will also be required.

Maximum Enrollment: 12 per section

Eligibility: Open, but students should have a general fitness level that will allow them to snorkel and hike.

Anticipated Cost: \$3100 which includes all expenses and incidentals. Students who wish to complete a scuba certification course should bring an additional \$100-\$300.

Grading: Pass/No Credit or A-F: Student's Choice

FIRST CLASS MEETING: MANGET 209, 9 AM

# domestic travel projects

## NEW YORK

Applause! Applause!



10021 INTM 3397 Section A Kim Barber-Knoll  
10022 INTM 3397 Section B Toni Anderson  
PRICE THEATER CLASSROOM (AM)

On this travel course students will study two musicals, one straight play, and an opera and see live productions of each. The course includes six days and five nights in New York City where students will see and critique a total of four productions and attend a seminar with a Broadway/Off-Broadway performer. The trip includes backstage tours of Radio City Music Hall and The Met.

Evaluation is based on written critiques and analyses of all productions.

Maximum Enrollment: 8 per section

Eligibility: Consent of instructor

Anticipated Cost: \$2150 includes airfare, accommodations, all ground transportation, all show tickets and tours, and meals.

Grading: Pass/No Credit

FIRST CLASS MEETING: PRICE THEATER CLASSROOM, 9 AM

## CALIFORNIA--CLOSED

This travel course will be physically active and includes walking or hiking every day.

### Exploring Southern California's Coast

10025 INTM 3486

Nickie Cauthen

SCI 209 (AM)

The Pacific coast has abundant marine life and interesting terrestrial habitats and geology that sharply contrast the familiar southeastern coast. For example tide pools team with marine organisms like sea stars, sea urchins, sea anemones, and mussels. Fish and marine mammals like seals and sea lions are also common near the shoreline. This course will explore intertidal zones, including tide pools, and terrestrial environments including the organisms that live there as well as the local geology of San Diego/La Jolla through hiking, kayaking, and snorkeling. We will also visit the San Diego Zoo and Birch Aquarium at the Scripps Institution of Oceanography to get a wider perspective of animals and marine life and their habitats. A day of service will be carried out with the La Jolla Historical Society. Topics important to the region like conservation, ocean science issues, or sustainability may also be explored.

Students will keep a written and photographic journal of their experience, a final reflection paper, and will choose a relevant topic to research that will be presented to the group.

Maximum Enrollment: 12

Eligibility: Open

Anticipated Cost: \$2500 includes airfare and ground transportation, accommodations, fees for non-optional activities, tour guide, and meals. Students will need to provide their own snorkel gear and wet suit, affordable options will be provided.

Grading Scale: Pass/No Credit or A-F: Student's Choice

FIRST CLASS MEETING: SCI 209, 9 AM

# INTERNSHIPS

## Internship in Business Management and Accounting

Jon Birkeli

10027 MGMT 4460  
10028 ACCT 4460

This course presents a unique opportunity for students to expand their understanding of the practical applications of enterprise operations concepts by entering into a contract with a cooperating area enterprise. The contract will specify students' and the host enterprises' obligations to each other.

Evaluation is based on logs and papers.

Eligibility: Permission of department

Maximum Enrollment: 12

Grading: A – F Scale

Credit: Only three semester hours (120 work hours) available in the Interim Term

Cost: none

FIRST CLASS MEETING AS SPECIFIED IN CONTRACT

## Capitol Hill Internship in Washington, D.C.

10029 INTM 4400

Tracy Lightcap



Students who have junior status (preferred) and a GPA of 3.0 in their major may be qualified to spend the Interim working in Washington, D.C. in an area related to their academic major or career interest. A GPA of 3.0 in the student's major area of study is preferred, but may be waived at the discretion of the program coordinator. Details of the internship will be determined by the student in collaboration with the appropriate academic department on campus and the Dean of the Capitol Hill Internship Program in Washington. Course requirements will be determined in conjunction with internship supervisors; any further requirements will be determined by the student's department. Students are responsible for travel costs to Washington, entertainment, and board; course and room fees associated with the CHIP program are part of the

student's normal tuition and room expenses at LaGrange College. (Students who do not room with the college must, of course, cover the \$800 room fee themselves.) For further details, see the CHIP website at <http://www.umcwchip.org/>.

Eligibility: Junior standing (preferred); departmental 3.0 GPA or higher.

Maximum Enrollment: 5

Anticipated Cost: \$1000-\$1500 depending on transportation and housing costs. A non-refundable \$250 deposit to reserve a place at the CHIP brownstone is required with your application.

Grading: A – F Scale

FIRST CLASS MEETING: As arranged with instructor.

## Academic Internships

### Career Development Center

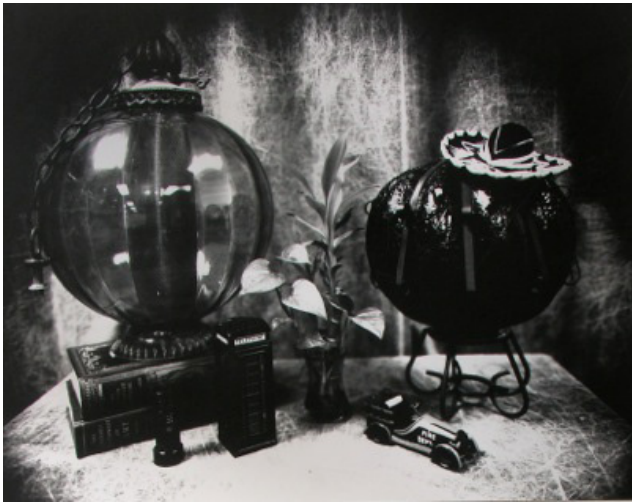
Academic Internships are available for sophomores-seniors, with academic department permission. Students interested in participating in an academic internship must complete the Internship Application provided in the Career Development Center (located on first floor of Smith Hall). Students must be declared in their majors, obtain a departmental signature, and meet with the Career Development Center Director to go over their résumés. Students will complete a portfolio and 120 hours of work.

# ON-CAMPUS COURSES

## Pinhole Photography

10051 INTM 3488

John Lawrence  
DODD 201 (AM)



This is a course in pinhole photography. Students will be required to make their own 8x10 Camera and will learn the basics of Aperture, shutter, focal length and relationships of the physics of basic photography. After the completion and trials of the pinhole camera students will be expected to make a series of photographs of subject matter of their own personal interest.

Evaluation will be based on craftsmanship and portfolio of images.

Eligibility: Open  
Maximum Enrollment: 8  
Anticipated Cost: \$35-\$45  
Grading: Pass/No Credit or A – F Scale, Student's Choice  
FIRST CLASS MEETING: DODD 201, 9 AM

## The Clay Bas Relief

10030 INTM 3399

Tim Taunton  
DODD 103 (AM)

This is a ceramic hand building course that deals exclusively with the creation of imagery set in low or bas relief. A series of large clay tile projects will explore concepts pertaining to this technique like adding and subtracting clay to build up the image. The class will also explore the use of technology in order to facilitate imagery development.

Students will be evaluated on their creativity, craftsmanship, and class participation.

Eligibility: Some clay experience would be helpful but not required  
Maximum Enrollment: 10  
Anticipated Cost: Up to approximately \$150 (may be deducted from student account).  
Grading: Pass/No Credit  
FIRST CLASS MEETING: DODD 103, 9 AM

## The Art of the Book

10059 INTM 4370

Marcia Brown  
DODD 303 (AM)

This course focuses on the importance of books and paper in civilization and the potential for books as a creative medium. Students make their own books and boxes after exploring various styles including portfolio, accordion, pamphlet, case binding, boxes, clamshell cases, and other expressive book and box forms. Attendance at demonstrations and slide lectures, a field trip to Atlanta, and intensive studio work are additional requirements.

Eligibility: Open  
Maximum Enrollment: 12  
Anticipated Cost: \$175 for materials  
Grading: Pass/No Credit  
FIRST CLASS MEETING: DODD 303, 9 AM

## Pop Culture & Feminism

10052 INTM 3489

Ashleigh Poteat  
LIBRARY CLASSROOM (PM)

Pop Culture & Feminism will explore the dialogue between popular culture and feminism. We will examine how pop culture (video games, music, toys, films, books, magazines, websites, advertising, television) defines gender and how feminism influences and is influenced by popular culture. Through multi-media interactions students will gain an understanding of this tangled relationship and learn how to view popular culture as more than mere entertainment.

Students will be graded on participation in class discussions and Moodle forums as well as two response papers, individual and group presentations and a final project of the student's choice.

Eligibility: Open  
Maximum Enrollment: 20  
Anticipated Cost: \$50  
Grading: A – F Scale  
FIRST CLASS MEETING: LIBRARY CLASSROOM, 1 PM

## The Play's the Thing

10032 INTM 3324

Tracy Riggs  
PRICE LAB THEATER (AM)

Students analyze, study, and interpret three to five scripts of varying genres that may include but are not limited to a Broadway musical, modern drama, classical drama, a period piece, modern comedy, or an experimental piece. Students travel to professional theatres to see live productions of each play and write papers evaluating the performances and production qualities. Some in-class projects are also included.

Attendance, participation and completion of all required assignments will constitute a passing grade.

Eligibility: Open  
Maximum Enrollment: 12  
Anticipated Cost: \$300 for tickets, scripts, and transportation  
Grading: Pass/No Credit  
FIRST CLASS MEETING: PRICE LAB THEATER, 9 AM

## Eye Deep in Hell: The Western Front, 1914-1918

10033 INTM 4320

Jeff Geeter

CEB 108 (AM)

Through lectures, guest speakers, film, music, art, and individual



study, this class will explore the technical, tactical, and strategic problems and developments that shaped the struggle on the Western Front in France and Belgium, the

decisive theater of World War One. Social and political thinking in the trenches and on the home fronts will be examined as well.

Two written tests, a research paper, and a class presentation will be used to determine grades.

Eligibility: Open

Maximum Enrollment: 20

Anticipated Cost: 2 books, approximately \$40

Grading: A-F Scale

FIRST CLASS MEETING: CEB 108, 9 AM

## Noah and the Zombies: Or, This Is the Way the World Ends

10053 INTM 4423

Nina Dulin-Mallory

MANGET 308 (AM)

Apocalyptic writing can be found in some of the world's oldest recorded stories. For thousands of years, how the world began and how it will end (or how a time would end) have compelled writers, philosophers, seers, and prophets. This course will examine end-of-times literature and film with a particular focus on the Book of Noah, comparing the biblical account to two films of that narrative, and to the way modern writers and filmmakers have envisioned the end. We'll see films that offer some of those modern catastrophic possibilities: asteroids (can one be nuked in time?), weather (we should have cared about those chlorofluorocarbons), viruses (zombies may be slow, but they're relentless), and technology run amuck (beady-eyed and steely-hearted robots).

Evaluation is based on daily discussion and response papers for each of four segments of the course.

Eligibility: Open

Maximum Enrollment: 20

Anticipated Cost: No cost

Grading: Pass/No Credit

FIRST CLASS MEETING: MANGET 308, 9 AM

## Survey of American Film

John Williams

10034 INTM 4352

LIBRARY AUDITORIUM (PM)

An eclectic journey through American film from Chaplin to Aronofsky designed to give students exposure to various genres (western, film noir, musical, etc.), various noted filmmakers (Chaplin, Ford, Hitchcock, the Coen Brothers, etc.), interesting topics (the fascination of violence, the meaning of life, etc.), and memorable cinematic artistry.

The focus of the class is critical assessment and response.

Eligibility: open

Maximum Enrollment: 20

Anticipated Cost: \$50 or less (textbook)

Grading: Pass/No Credit

FIRST CLASS MEETING: LIBRARY AUDITORIUM, 1 PM

## Critical Reflections on Children's Literature

10054 INTM 4424

Amanda Kellogg

MANGET 306 (AM)

*"Alice...had read several nice little stories about children who had got burnt, and eaten up by wild beasts, and other unpleasant things, all because they would not remember the simple rules their friends had taught them."*

**Lewis Carroll, Alice in Wonderland**



For eras, children's literature has been a vehicle for teaching young people, like Alice, lessons designed to keep them safe and regulate or adjust their behavior. Such texts, however, also communicate complex messages about the cultures that produce them and the values they intentionally or unintentionally cultivate in the young minds they entertain. What might we conclude about contemporary American reading culture, for instance, by noting that Disney now offers a comprehensive line of 5-minute bedtime stories?

This course will encourage students to read, discuss, and write critically about popular children's literature throughout time. Students will have an opportunity to revisit familiar stories and encounter some that Barnes and Noble stores probably do not carry anymore in order to answer questions such as "What is the pedagogical value of fiction or poetry?"; "How does this story con-



tribute to or problematize conceptions of race, gender, or class?"; and "How does this text and the culture that produced it characterize childhood?"

Evaluation will be based on participation in class activities and discussion, preparation (as measured by reading quizzes and in-class journal prompts), and short weekly papers.

Eligibility: Completion of ENGL1101 with a grade of C or higher  
Maximum Enrollment: 20  
Anticipated Cost: \$50-\$60  
Grading: Pass/No Credit or A-F Scale: Student's Choice  
FIRST CLASS MEETING: MANGET 306, 9 AM

## Street French

10035 INTM 3415

Elizabeth Appleby  
MANGET 104 (AM)

Oh, la vache! After all that time studying proper French, you finally get a chance to practice and everyone is using French slang. No need to worry! Here is your chance to "get plugged in" and converse with style. At least one semester of French is a prerequisite to enrollment in the class. Soit pas cinglé! Faut pas secher le cours!

Evaluation will be based on class participation, exams and quizzes, and skits and dialogues.

Eligibility: At least one semester of French  
Maximum Enrollment: 18  
Anticipated Cost: none  
Grading: A – F  
FIRST CLASS MEETING: MANGET 104, 9 AM

## GRITS: Southern Women in Popular Southern Fiction & Film

10055 INTM 4425

Amanda Plumlee  
MANGET 109 (AM)

This course will explore the diversity of Southern women and their depiction in popular Southern fiction and film.

These literary and cinematic depictions will be compared and contrasted with historical and nonfictional accounts of Southern women. Stereotypes will be debunked as the authentic legacy of Southern women is discovered.

Evaluation will be based on daily quizzes, reflection papers, leading a class discussion, class participation, and a final creative project.

Eligibility: Open  
Maximum Enrollment: 20  
Anticipated Cost: \$50-\$60 for textbooks.  
Grading: Pass/No Credit or A-F Scale: Student's Choice. Students selecting the Pass/No Credit option will complete all assignments except for the final project.  
FIRST CLASS MEETING: MANGET 109, 9 AM

## The Work of C.S. Lewis

10036 INTM 3416

John Cook  
MANGET 202 (AM)



This class will be an exploration of the writings of C.S. Lewis, one of the major Christian writers of the twentieth century. Through reading discussion, papers, and films, students will develop an appreciation for this well-loved Christian author and theologian.

Evaluation will be based on quizzes, class participation, and a very extensive reading journal.

Eligibility: Open  
Maximum Enrollment: 20  
Anticipated Cost: \$100-\$150 for books, works of C.S. Lewis.  
Grading: Pass/No Credit or A-F Scale: Student's Choice  
FIRST CLASS MEETING: MANGET 202, 9 AM

## Reading the Landscape: Cultural and Historical Geographies of LaGrange, Georgia

10037 INTM 3449

Joshua Van Lieu  
SMITH 326 (AM)

Space is a text written and rewritten at the confluence of the natural environment and human activity. Environments influence people and people reshape environments such that the natural and built landscapes in which we live express our cultural, political, and socio-economic histories. In this course we will have the opportunity to explore the historical, cultural, and social geographies of the city of LaGrange through readings in theoretical geography and local history and by way of frequent field trips throughout LaGrange to experience the spaces and places of the city firsthand. The class will culminate with student presentations on local geographies or sites following individual interest.

Evaluation will be based on attendance, class participation, and quality of presentation.

Eligibility: Open  
Maximum Enrollment: 20  
Anticipated Cost: \$50-\$60  
Grading: Pass/No Credit or A-F Scale: Student's Choice  
FIRST CLASS MEETING: SMITH 326, 9 AM

## Laws and Lawyers: Images of the American Legal System in Literature and Film

10039 INTM 4319

Tracy Lightcap  
CACAD 222 (AM)

This course will be an introductory examination of the American legal system and some of the conceptual tools that can be used to analyze it. The method we will use is somewhat different than usual, however. In this course, we will look at three different areas of the law – criminal law, civil law, and constitutional law – and how the functioning of the legal system in each is portrayed in literature and film. Within each of these areas we will compare fictional and non-fictional presentations, using the contrasts between them as a way to explain the role of law and lawyers in the contemporary United States using three different and complimentary approaches. At the end we should be able to provide preliminary answers to several important questions: What are the institutional characteristics of our legal system? What are the social and political functions of the legal system and how (why) are they presented culturally? What do our visions of our legal system tell us about the system and ourselves? How can we use critical analyses of our legal system to inform our political efforts to change it?

Evaluation will be based on class participation, quizzes, a term paper, and a final exam.

Eligibility: Open  
Maximum Enrollment: 20  
Anticipated Cost: The cost of the books.  
Grading: Pass/No Credit or A – F Scale, Student's Choice  
FIRST CLASS MEETING: CACAD 222, 9 AM

## Rick's World: The Walking Dead and Philosophy

10056 INTM 3490

Randall Adams  
ON-LINE COURSE

This course examines philosophical concepts couched in popular culture. Viewing popular culture as a sounding board for cultural concepts began with the Critical School of Social Thought in the 1930s. Today, media and visual culture have become a mainstay of social thought and the analysis of cultural concepts and philosophy. The popular graphic novel and television program provide the background for the examination of major philosophers.

Evaluation will be based on three reflective essays and a presentation.

Eligibility: Open  
Maximum Enrollment: 20  
Anticipated Cost: \$60-\$70 for text and /or video access  
Grading: A – F Scale

## Can a Hamster be your Daddy? . . . An Analysis of Stereotypes in the Media

10057 INTM 3491

Bobby Jo Otto  
CACAD 122 (PM)

This course examines class, gender, sexuality, and racial stereotypes embedded in different forms of media.

Using sociological theories to critique images depicted in television, movies, ads, and magazines, students will gain a better sense of how their realities are often constructed by popular culture.



Evaluation will be based on two reflective essays, in-class writing assignments, quizzes, and a paper and presentation.

Eligibility: Open  
Maximum Enrollment: 20  
Anticipated Cost: \$60-\$70 for textbooks.  
Grading: A – F Scale  
FIRST CLASS MEETING: CACAD 122, 1 PM

## Christian Yoga

10041 INTM 3394

Lydia Rosencrants  
SMITH BAILEY ROOM (AM)

Yoga as a form of exercise has grown more popular in the West in recent years. However, yoga is not merely physical activity like running and swimming. It is designed for much more spiritual purposes and originates in the Hindu belief system. Because of this, some Christians have chosen not to practice yoga, for fear they are rejecting Christ and opening up themselves to demons. On the other hand, some Christians have adopted yoga as their own, believing that much of the practice follows Christ's teaching and can be used to enhance their spiritual life. This course will examine these conflicting points of view through readings, yoga practice, discussion, presentations and ultimately a retreat at a monastery here in Georgia. Please note that the course will require the practice of yoga and meditation.

Eligibility: Open  
Maximum Enrollment: 20  
Anticipated Cost: \$120 for retreat; \$75 for books and supplies  
Grading: Pass/No Credit or A – F Scale, Student's Choice  
FIRST CLASS MEETING: SMITH BAILEY ROOM, 9 AM

**Learning and Living Leadership** Linda McMullen  
10058 INTM 3469 Marc Shook  
SMITH 309 (AM)

Using current literature regarding leadership development in college students, contemporary novels containing leadership lessons, as well as the writings from some of history's great leaders, this course challenges students to explore and develop their own leadership style. Graded assignments include participation in class discussions, journal entries, a structured debate, and final paper/class presentation centered on an interview with a community leader.

Course grades will be issued for assigned journal entries, class participation, class presentations, as well as the final reflection paper.

Eligibility: Open  
Maximum Enrollment: 25  
Anticipated Cost: Approximately \$100  
Grading: Pass/No credit or A – F Scale, Student's Choice  
FIRST CLASS MEETING: SMITH 309, 9 AM

**Personal Financial Planning** Cindi Bearden  
10042 INTM 4331 SMITH 303 (AM)

This course covers the basic topics of personal financial planning, including investing for the future, acquiring and managing credit, making wise consumer choices regarding purchase of automobiles, homes, and insurance. Also included are taxes, budgeting, and retirement estate planning. Students attend "hands on" workshops with experts, find and read current relevant articles in order to make and defend decisions in small groups. Written summaries of each speaker's presentation and small group reports using PowerPoint are required.

Evaluation will be based on participation, turning in assignments and presentation grades.

Eligibility: Open, Juniors and Seniors will have priority.  
Maximum Enrollment: 21  
Anticipated Cost: \$25 for books and materials to be purchased by students.  
Grading: A – F Scale  
FIRST CLASS MEETING: SMITH 303, 9 AM

**Exploring Teaching** Ethyl Ault  
10043 EDUC 1198 HAWKES 123 (AM & PM)

This course is a field-based introduction to the teaching profession and to the public's perception of teaching and school as it is evidenced in the popular culture and media. Students examine the constructivist approach to teaching and learning, the roles of teachers, teaching as a profession, contemporary issues such as multiculturalism, diversity, active learning, etc. The course includes field experiences at local schools.

Evaluation will be based on classroom attendance, field experiences and reflections, reading and reflections, "Why did I choose...?", and position statement on films.

Students must provide their own transportation to the schools.

**Note: This course may not be substituted for EDUC 1199.**

Eligibility: Open  
Maximum Enrollment: 20  
Anticipated Costs: \$40 for books  
Grading: A – F Scale  
FIRST CLASS MEETING: HAWKES 123, 9 AM

**Survey of Medical and Allied Health Careers**

10044 INTM 4309 Melinda Pomeroy-Black  
SCI 202 (AM)

This course examines assorted medical and allied health professions. Areas to be emphasized include admission requirements, courses of study, preparation for entry into the field, and fields of study. A major component of the course requires students shadow professionals in the field. Students must undergo an application process prior to registration for the course and must be placed in the course by the instructor. The first step of the process ensures there are adequate field experiences for student interests and that students are academically and socially prepared to represent the College. The second step of the process includes a criminal background check, a negative drug screen, and medical information from the student as required by the field sites. An up to date vaccination record is required, and the student must have his/her own mode of transportation. Field site and/or college orientation prior to shadowing may also be required. Contact the course instructor to initiate the application process and pick up the application materials. Since there are multiple steps in this process, the course roster will be closed October 24, 2014.

Eligibility: Students must have sophomore or greater standing (30+hours) and must have the permission of the instructor to register for this course.  
Maximum Enrollment: 16  
Anticipated Costs: \$100-\$400, depending on vaccination history  
Grading: A – F Scale  
FIRST CLASS MEETING: SCI 202, 9 AM

## Water Wars: Use and Misuse of Our Water Resources

10045 INTM 3427

Randy Colvin  
SCI 211 (AM)



How do we get our water? Is it sustainable? What needs do people have and how do cities, counties and states service those needs? What do we do to protect, clean and re-use this vital resource? This class will take a behind-the-scenes look at how water is used and misused in the Southeastern United States (primarily Alabama and Georgia). We'll learn together about how often the public is unaware of the process of water treatment and the wasteful nature of certain activities. We'll engage with directors of state, city and county agencies who are actively involved in providing and improving our water resource. After we have developed some knowledge we'll go into the field to monitor and see for ourselves this often hidden battle for clean water.

Eligibility: Open  
Maximum Enrollment: 15  
Anticipated Cost: \$100-\$150 for SIFAT overnight excursion fee for Global Village/Slum experience.  
Grading: A - F Scale  
FIRST CLASS MEETING: SCI 211, 9 AM

## Game Shows, Pop Culture, and Numb3rs

10046 INTM 3433

Stacey Ernstberger  
SCI 116 (AM)

Are you interested in the chances of winning one of your favorite game shows? In this course, we will watch, recreate, play, and discuss several game shows, and delve into the mathematics, in most cases, the probabilities - involved in each one. Some of these game shows include Let's Make a Deal, The Price is Right, Deal or No Deal, and Jeopardy. We will watch and discuss portions of movies and TV shows which involve mathematics, such as Numb3rs. We will also learn the probabilities and odds associated with several popular casino games, including Craps, Poker, and Blackjack. This is math at its most fun!

Evaluation will be based on in-class participation, several short papers, quizzes, and at least two group projects.

Eligibility: MATH 1101  
Maximum Enrollment: 20  
Anticipated Cost: possible textbook cost  
Grading: Pass/No Credit or A - F Scale, Student's Choice  
FIRST CLASS MEETING: SCI 116, 9 AM

## Spiritual NUMB3RS

10047 INTM 3419

Greg McClanahan  
SCI 303 (AM)

What do the numbers 1, 2, 3, 7, and 10 have in common? They are all spiritual numbers, linked together by Christ. In this course, students will focus on Jesus Christ, the Holy One of God, and spiritual volumes whose titles contain numbers (or mathematical terms) associated with Him in some way. One or more nearby class-related excursions is planned, including a visit to Explorations in Antiquity for a meal.

Evaluation will be based on class preparation and participation, reflections, and participation in the service project and field trip(s).

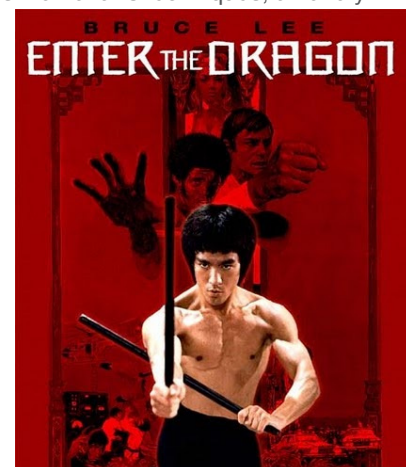
Eligibility: Open  
Maximum Enrollment: 20  
Anticipated Costs: approximately \$80 for books, \$50 for expenses related to field trip(s).  
Grading: Pass/No Credit  
FIRST CLASS MEETING: SCI 303, 9 AM

## Breaking the Traditional Barriers: How Bruce Lee's Philosophy Impacts Films, Culture, and Martial Arts

10048 INTM 4390 MARIOTTI GYM (AM)/SCI 116 (PM)

William Yin

Through the study of various martial arts techniques, an analysis of martial art films, a hands-on daily routine and practice of martial arts skills, this course will shed light on Bruce Lee's philosophy and theories of life and martial arts and the profound impact this one individual made across cultures, films, and martial arts in general.



Evaluation will be ongoing. Efforts in physical activity and classroom discussions will be monitored by the instructor on a daily basis. Written papers and an end of course physical activity will be required.

Eligibility: Open  
Maximum Enrollment: 25  
Anticipated Costs: none  
Grading: Pass/No Credit or A - F Scale, Student's Choice  
FIRST CLASS MEETING: MARIOTTI GYM, 9 AM

## departmental courses

### An Introduction to Pharmacotherapy and Human Pathophysiology

Anna Odom

10049 NURS 3321 SMITH 330 (AM)/CACAD 315 (PM)

This course provides an introduction to the pharmacologic concepts and skills essential for nursing practice including the basic science of drugs, dosage calculations, and medication administration techniques as well as an introduction to human pathophysiology and the nursing process as it relates to drug therapy.

Evaluation is based on written examinations, dosage calculation exam, completion of ATI Pharmacology Made EZ Modules.

Eligibility: Successful completion of NURS 3310, 3311, 3312, and 3400

Maximum Enrollment: 50 (limited to junior level nursing students; required for course major)

Anticipated Cost: none

Grading: A – F Scale

FIRST CLASS MEETING: SMITH 330, 9 AM

### Special Topics in Psychology: Survey of Neuroimaging

Christi Hu

10050 PSYC 4480 CACAD 122 (AM)

Recent advances in neuroimaging techniques have allowed researchers to look into the brain of a living human and observe the structure and function of this complex organ. This class will cover both functional and structural neuroimaging along with recent research findings using these techniques.

Evaluation will be based on assignments, journal club, and project.

Eligibility: Major in Psychological Science with junior/senior standing or permission of the professor.

Maximum Enrollment: 20

Anticipated Cost: none

Grading: A – F Scale

FIRST CLASS MEETING: CACAD 122, 9 AM